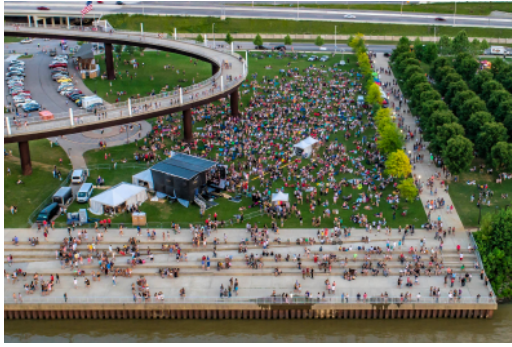


Waterfront Park



Big Four Lawn
Daily User Fee - \$2,500



Orange or Purple Upland Meadow
Daily User Fee - \$2,000



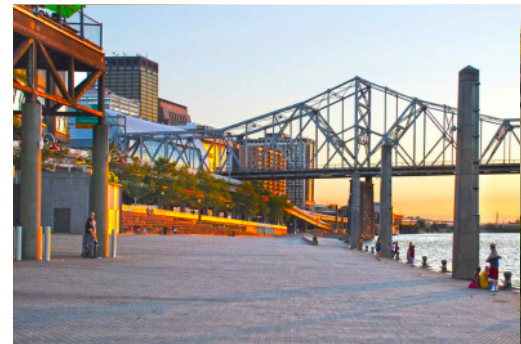
Festival Plaza
Daily User Fee - \$2,500



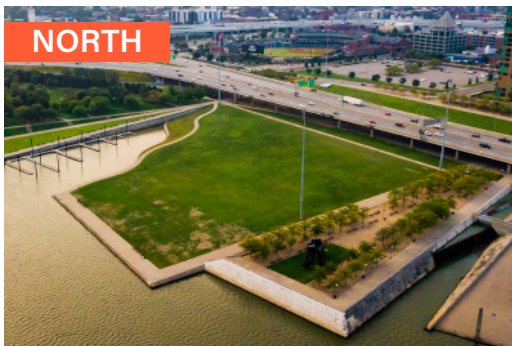
Harbor Lawn
Daily User Fee - \$2,000



Brown Forman Amphitheater & Lawn
Daily User Fee - \$2,000



Wharf
Daily User Fee - \$2,000



TurfMutt Great Lawn - North
Daily User Fee - \$2,500



TurfMutt Great Lawn - South
Daily User Fee - \$2,500



Under The Bridges
Daily User Fee - \$2,000

Additional Information

A \$1,000 refundable damage deposit fee associated with each venue

15% non-profit discount ♦ A discounted rate is applied to load in & load out dates
Electric (if available in venue - 100 amps or less), Cardboard Boxes, & Trash Bags are included in the user fee.

Distribution Trailer (400 amps) - \$500 ♦ Stage - \$1,000 ♦ Reserved Parking - \$250 per lot

Contact

129 W River Road
Louisville, KY 40202
502.574.3768

catherine.nelson@louisvilleky.gov
502-574-3768
ourwaterfront.org

*If your event has an attendance of over 5,000 people and/or depending on your infrastructure then standard rates do not apply. Further information will be needed to determine the user fees.